



*Murray Grant*  
2019

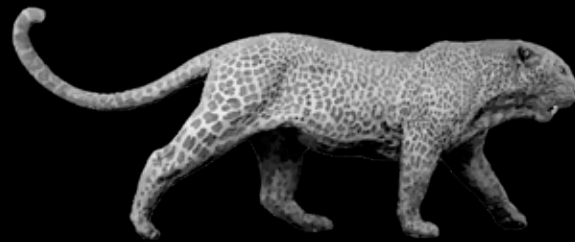




[www.murraygrantbronzes.com](http://www.murraygrantbronzes.com)  
[murray@murraygrantbronzes.com](mailto:murray@murraygrantbronzes.com)

# MURRAY GRANT

*Bronzes Ltd.*



*African Wildlife Sculptures*

A self – taught Bronze Sculptor of Wildlife Art with no formal art schooling, Murray Grant credits his remote upbringing in Kenya with a rancher father and a wildlife artist mother (Guy and Lavinia Grant), as the ultimate cornerstone for his life as an wildlife Sculptor and Artist.

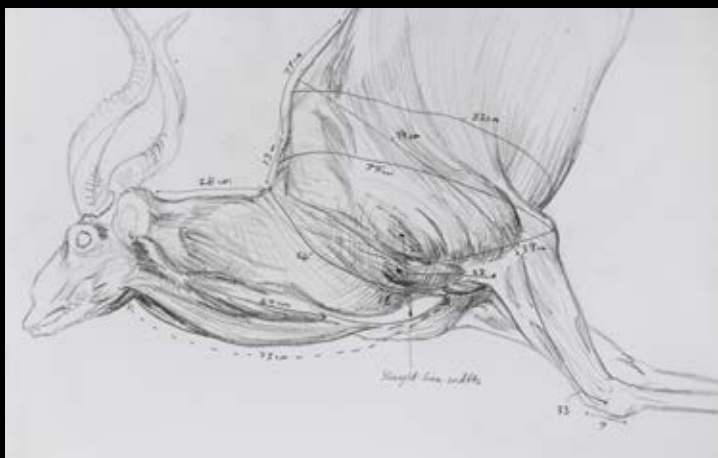
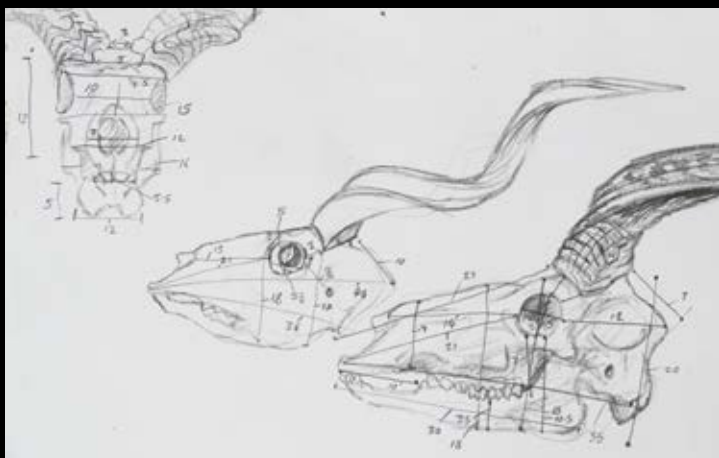
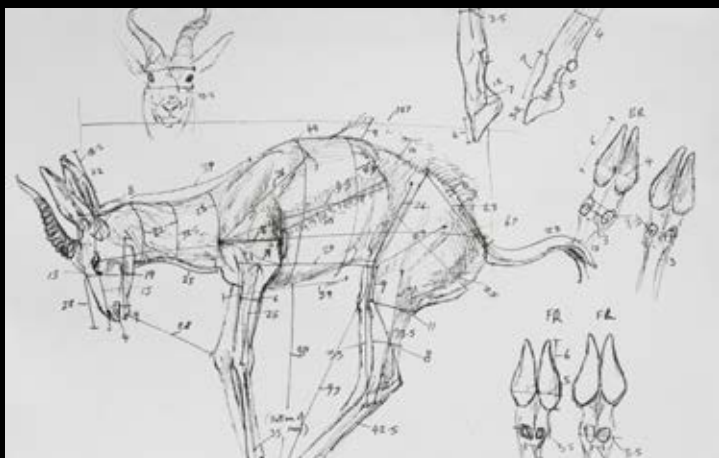
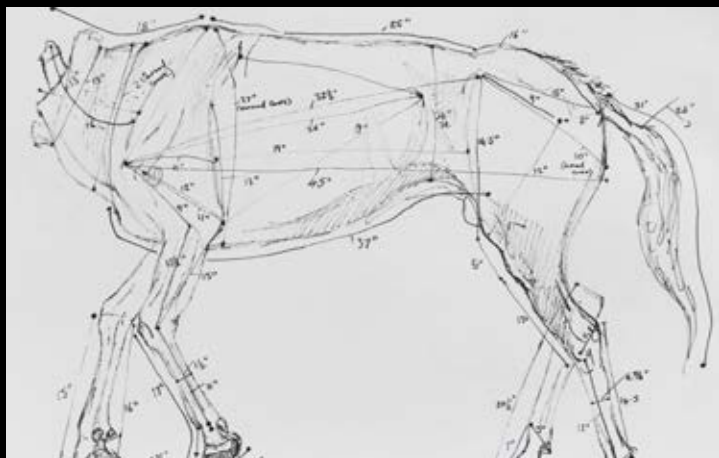
Murray was born and brought up on and is now a Director of El Karama Ranch Kenya, a working property that combines wildlife conservation with holistic cattle ranching and innovative agriculture. El Karama is considered a forerunner in sustainable business practices in East Africa. Based in the Laikipia region, one of the country's most diverse and successful habitat and wildlife conservation areas, Murray's home gives him access to some of the world's most unusual wildlife experiences.

He is one of very few Sculptors in his field who lives and breathes his subject full time. Murray continues to live and work at El Karama with his wife and two small children, contributing to conservation through his Fine Art. His private studio is next door to the award-winning eco-tourism safari lodge that he founded in 2004, which welcomes wildlife enthusiasts and responsible travelers from all around the world. [www.elkaramalodge.com](http://www.elkaramalodge.com)

Murray accepts commissions from private collectors, but also works on sculptures and projects of his own like the Spiral Horned Antelope of Africa series, portraits of big 'Tusker' elephants of Kenya and his eternally elusive muse: the Leopard.

















# WILDLIFE CONSERVATION CONNECTION

Committed to conservation of habitat and biodiversity on El Karama Ranch, (Laikipia, Kenya) Murray supports many relevant projects within its borders and beyond. Murray has access to some of Africa's best wildlife areas and collaborates widely with the local wildlife authorities to use his research materials in crucial wildlife monitoring and protections programmes.

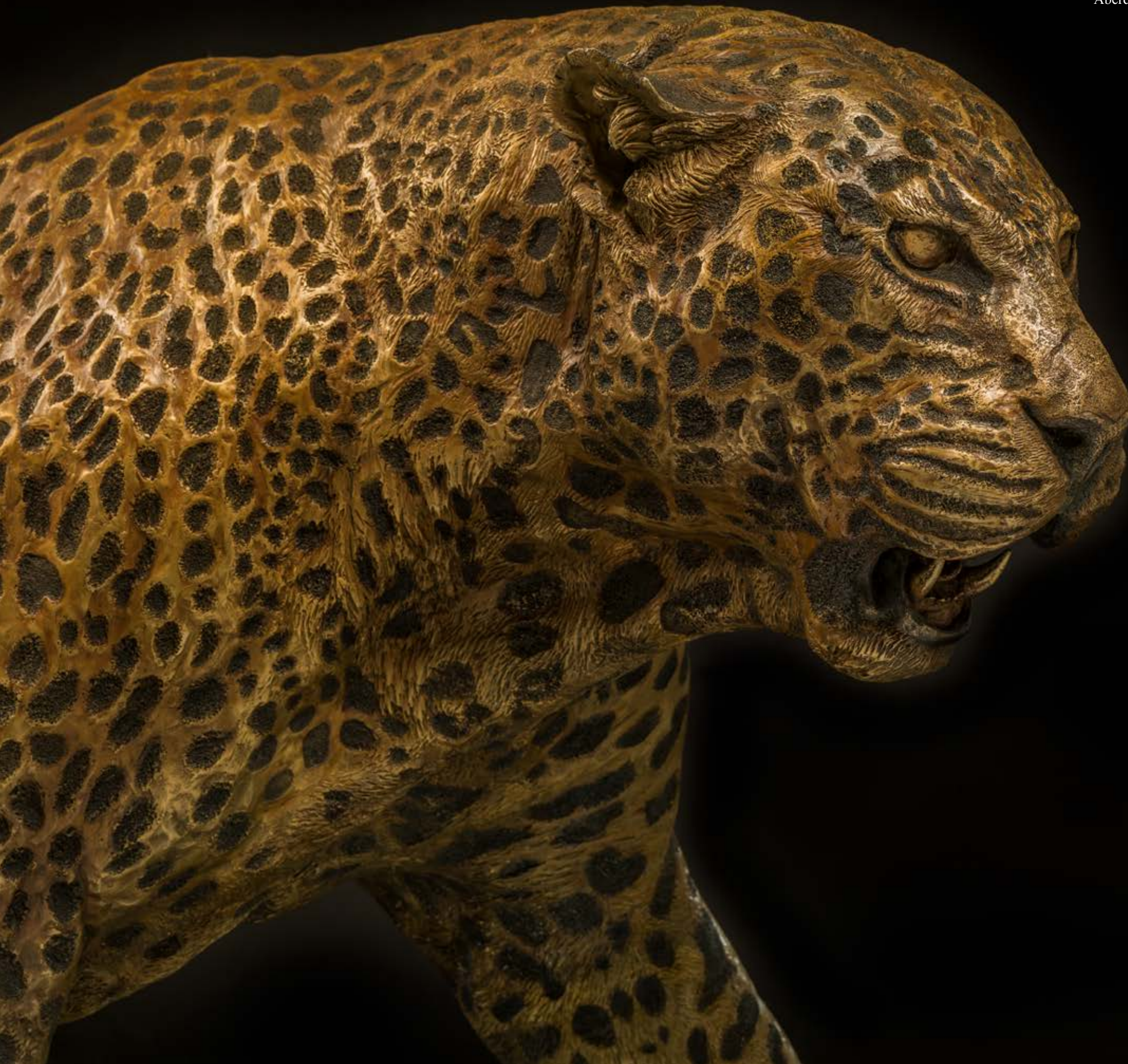
Using some of the most cutting edge cameras and motion sensor cameras, Murray now has archives of research photography on several important species. These images are used by those working in wildlife surveillance to identify individuals and territories, while his finished sculptures are often made available for relevant fundraising opportunities.











Aberdare Leopard (Life Size)

Edition of 10  
Height: 800 mm  
Width: 2030 mm  
Depth: 740 mm  
Weight: 247 kg  
Material: Bronze

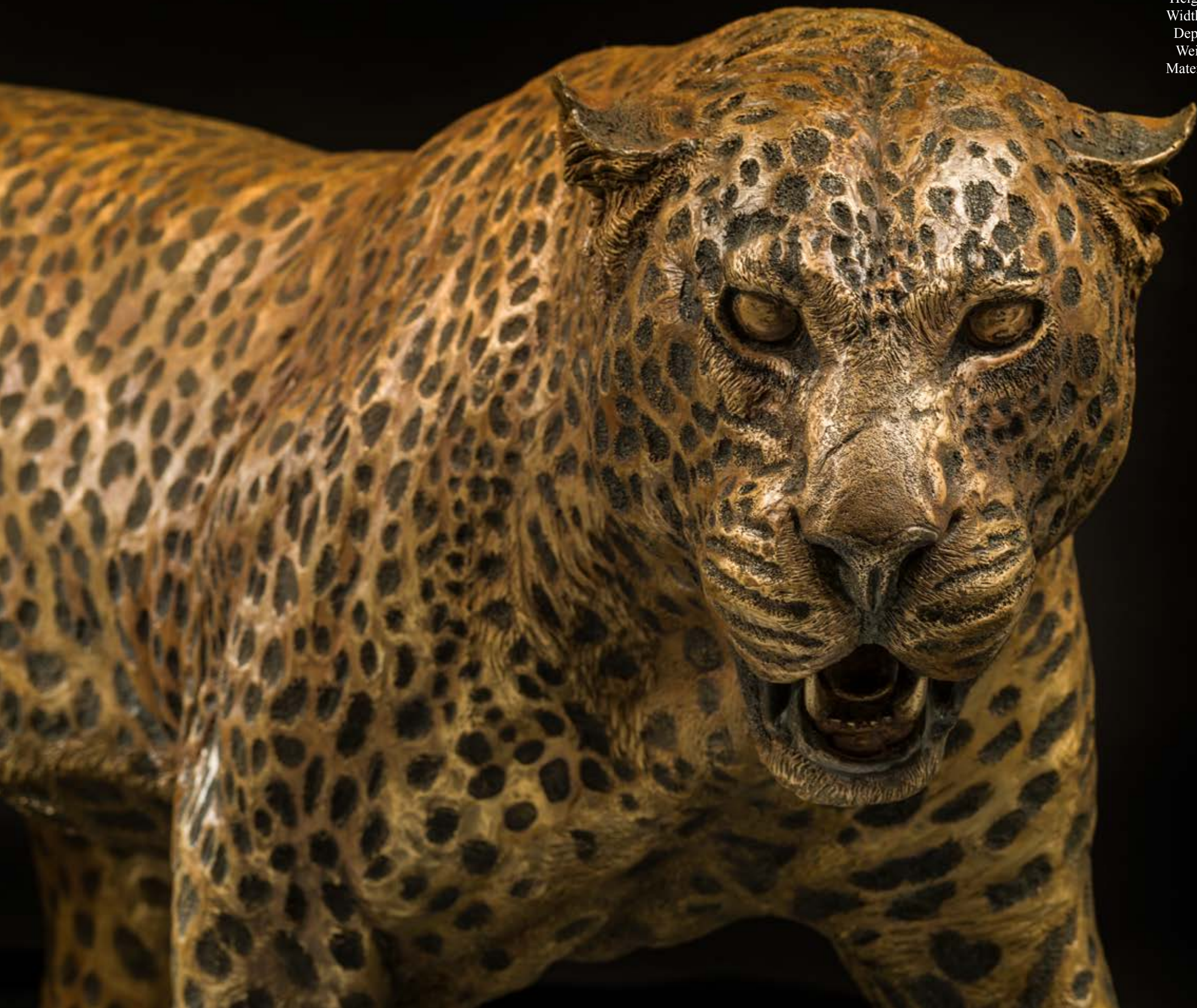






Aberdare Leopard (Life Size)

Edition of 10  
Height: 800 mm  
Width: 2030 mm  
Depth: 740 mm  
Weight: 247 kg  
Material: Bronze





Aberdare Leopard Maquette

Edition of 10

Height: 220 mm

Width: 125 mm

Depth: 564 mm

Weight: 9.8 kg

Material: Bronze





East African Greater Kudu

Edition of 10  
Height: 875 mm  
Width: 400 mm  
Depth: 750 mm  
Weight: 34.6 kg  
Material: Bronze





Female Impala and Fawn

Edition of 10

Height: 205 mm

Width: 238 mm

Depth: 90 mm

Weight: 1.963 kg

Material: Sterling Silver









Luganzo Sable Antelope Bull

Edition of 10  
Height: 830mm  
Width: 800mm  
Depth: 200mm  
Weight: 38.4kg  
Material: Bronze





Record Nile Crocodile Skull

Edition of 10  
Height: 330 mm  
Width: 500 mm  
Depth: 940 mm  
Weight: 74.8kg  
Material: Bronze





Pattersons Eland Bulls

Edition of 10  
Height: 515 mm  
Width: 290 mm  
Depth: 1920 mm  
Weight: 86.2 kg  
Material: Bronze













Record Nile Crocodile Skull (Silver)

Edition of 10  
Height: 76 mm  
Width: 210 mm  
Depth: 120 mm  
Weight: 1.809 kg  
Material: Sterling Silver







Satao (Bull Elephant)

Edition of 10  
Height: 700 mm  
Width: 600 mm  
Depth: 1050 mm  
Weight: 87 kg  
Material: Bronze







